

## TARGET INDUSTRY PROFILE

# FABRICATED METAL PRODUCT MANUFACTURING

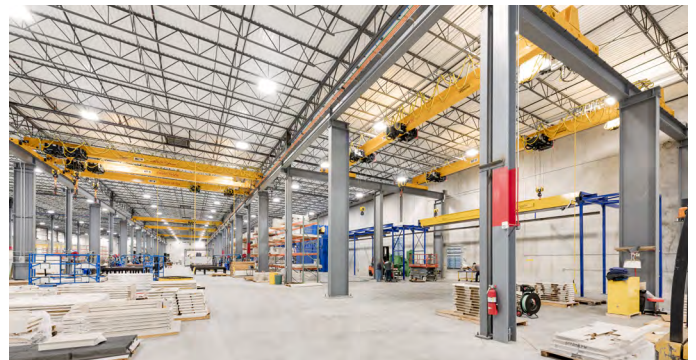
NAICS:332

## OVERVIEW

	Total Employment	Avg. Annual Wages	Location Quotient	2015-2020 Job Growth %
Seguin Region	253	\$56,000	1.37	+0.0%
Guadalupe County	692	\$58,000	1.60	+41.4%
San Antonio - New Braunfels MSA	3,879	\$63,600	0.36	+22.8%

Fabricated metal product manufacturing (NAICS: 332) is the largest manufacturing subsector in Texas in terms of employment, accounting for 14.0% of Texas' manufacturing jobs in 2016. The subsector's share in the U.S., by comparison, was 11.5%. Seguin is home to nine manufacturers in this subsector and is prime to add more very soon. Demand for fabricated metal products is driven by local and regional requirements and other industrial needs. In Seguin, 26% of the goods and services that this manufacturing subsector requires to operate are provided within the region. Workforce availability for this subsector in key occupations such as machinists; production and operating workers; cutting, punching, and press machine setters; welders; assemblers and fabricators; and sheet metal workers is above average with an overall concentration of 1.86.

Overall job growth for these key occupations within this subsector was 22.0% from 2015-2020, indicating that the regional talent pool is increasing.



### 253

Jobs decreased by 22 and projected to decrease by 6 over the next 5 years

### 1.37

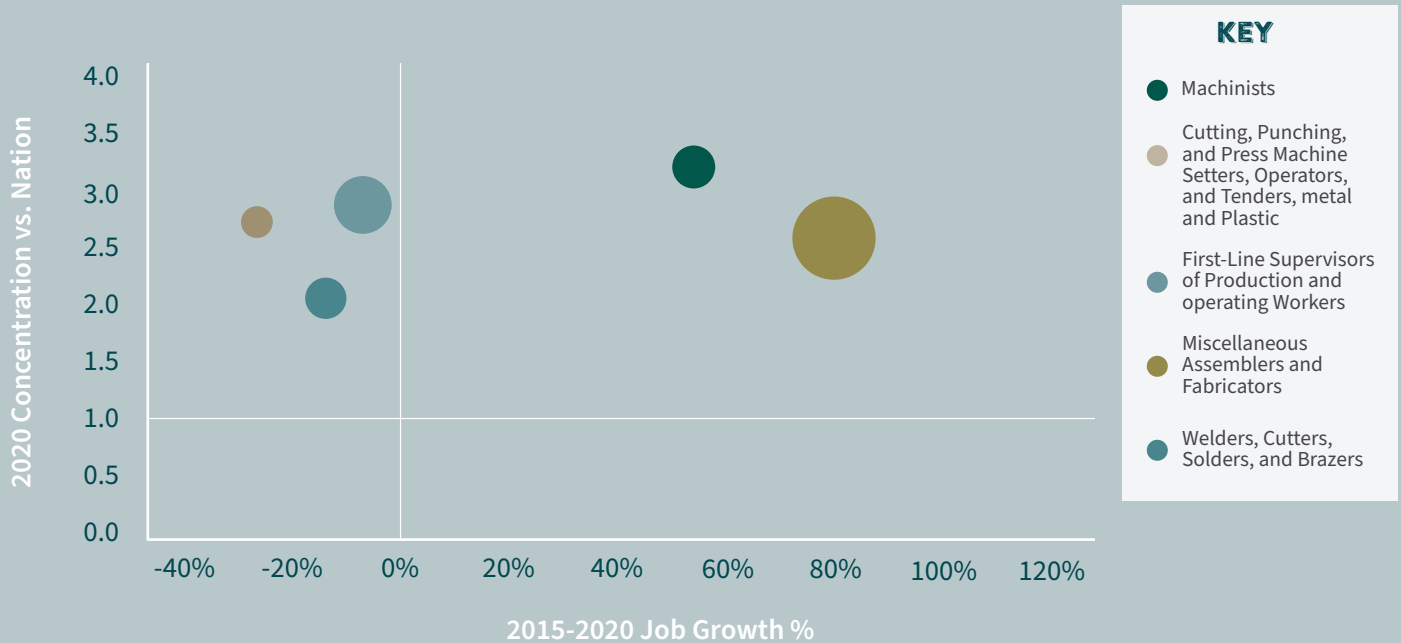
Regional job concentration is 1.37 times the national job concentration

### \$56,000

Regional earnings per job are \$15.4K below the national earnings per job of \$71.4K

# WORKFORCE AVAILABILITY

Key occupations for your selected industries have an overall concentration of 1.86, indicating above average workforce availability. These occupations experienced overall job growth of 22.0% from 2015-2020, indicating that the regional talent pool is increasing.



	Concentration	2015 Jobs	2020 Jobs	2025 Jobs	Median Hourly Earnings	Average Hourly Earnings
Machinists	3.16	97	152	175	\$22.70	\$23.74
Cutting, Punching, and Press Machine Setters, Operators, and Tenders, Metal and Plastic	2.72	83	65	59	\$16.83	\$17.39
First-Line Supervisors of Production and Operating Workers	2.69	226	213	226	\$27.74	\$30.40
Miscellaneous Assemblers and Fabricators	2.45	228	412	418	\$12.54	\$13.67
Welders, Cutters, Solders, and Brazers	2.13	134	114	117	\$19.55	\$21.38

**SEGUIN  
INDUSTRY CLUSTER  
MANUFACTURERS**











ECONOMIC  
DEVELOPMENT  
CORPORATION